

Blue Line Gen2
TriTech Motion Detector
ISC-BDL2-W12



en Installation Guide

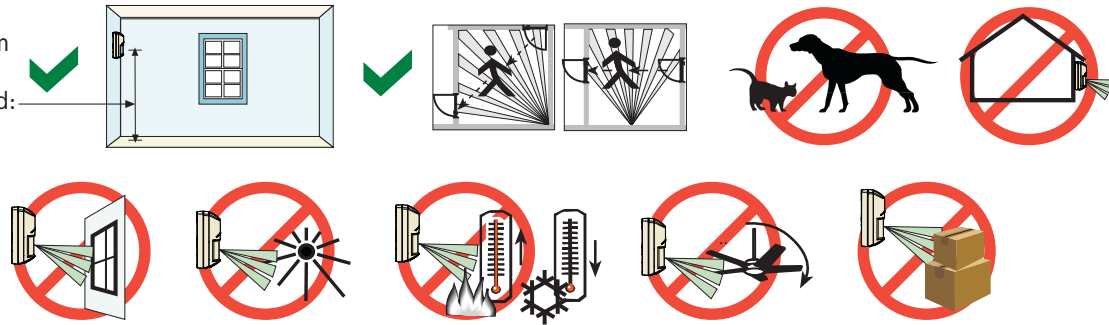
This product is intended for use in the following countries within the European Union and in other countries outside of the European Union:

ISC-BDL2-W12G (10.525 GHz):
Austria, Belgium, Denmark, Finland, Greece, Italy, Luxembourg, Netherlands, Norway, Portugal, Spain, Sweden

ISC-BDL2-W12H (10.588 GHz):
France, United Kingdom

Optional Brackets:
B328, B338, B335

2,2 m - 2,75 m
(7.5 ft - 9 ft)
Recommended:
2,2m (7.5 ft)



Changes or modifications not expressly approved by Bosch Security Systems, Inc. can void the user's authority to operate the equipment.

UL/C-UL
Perform Walk Test at least once a year.
Use only a Listed limited-power source.
The Listed control unit or a Listed burglary power supply must provide 4 hours (40 mAh) of standby power.
Install the unit in accordance with National Electrical Code NFPA 70 and Part 1 of the Canadian Electrical code CSA C22.1.
Adjust the microwave range control, if necessary, to achieve maximum range.

SELV
Connect all wiring to a safety extra-low voltage (SELV) circuit only.

CE EN 50131-2-4 Grade 2
EN 50130-5 Environmental Class II
IP30 IK04 (EN 60529, EN 62262)

Ligue todas as cablagens apenas a um circuito de segurança de tensão extra baixa (SELV).

Conecte el cableado únicamente a un circuito de seguridad para voltajes muy bajos (SELV).

Alle Drähte sind ohne Ausnahme an Niederspannung anzuschließen.

INCERT B-509-0052/b

NF Certificats NF A2P
2820200003-A0 (W12H)
B2P 2820200003-C0 (W12G)
2 boucliers NF324 - H58
Autosurveillance à l'ouverture
Immunité champ magnétique
Testé sans masque de vision verticale
www.afnor.org
www.cnpp.com

Sluit alle bedrading uitsluitend aan op een circuit met een extra lage veiligheidsspanning.

Prenez soin de connecter tous les câbles à un circuit à très basse tension de sécurité (TBTS).

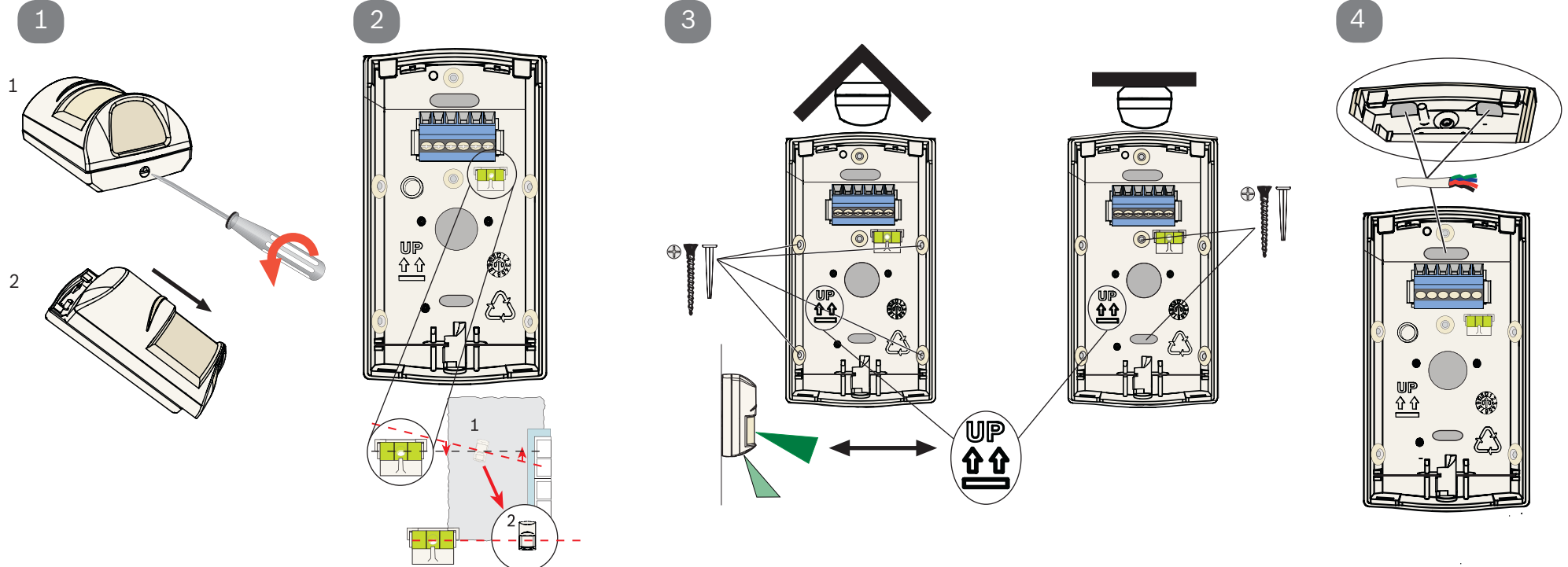
Collegare tutti i cavi esclusivamente a un circuito SELV (circuito di sicurezza a bassissima tensione).

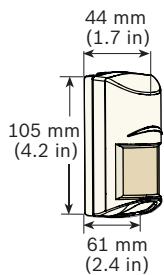
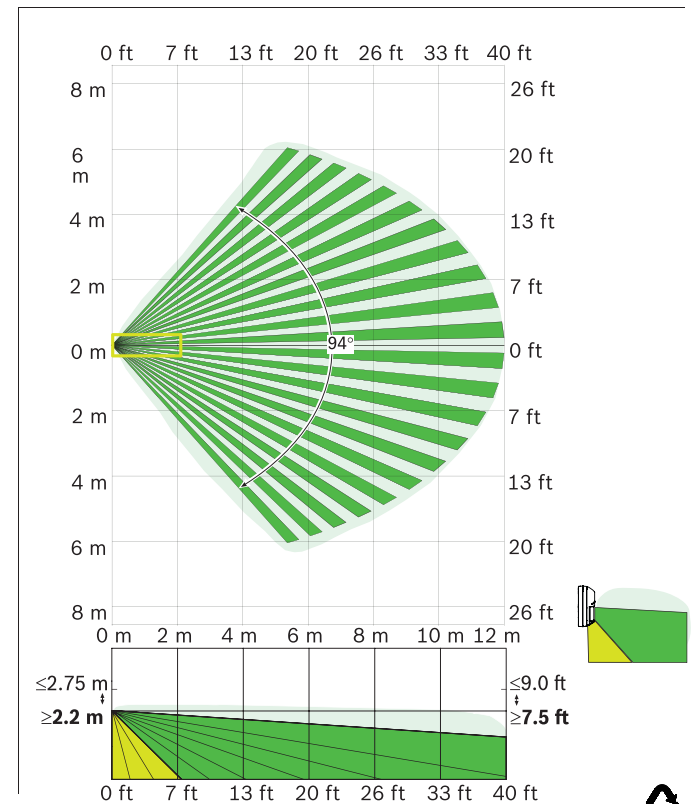
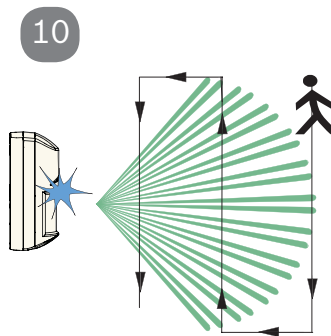
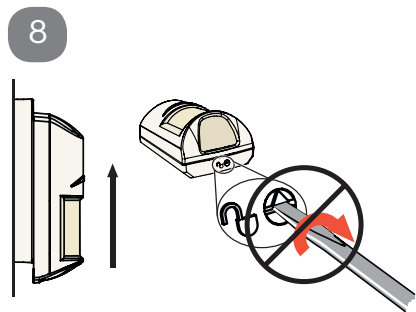
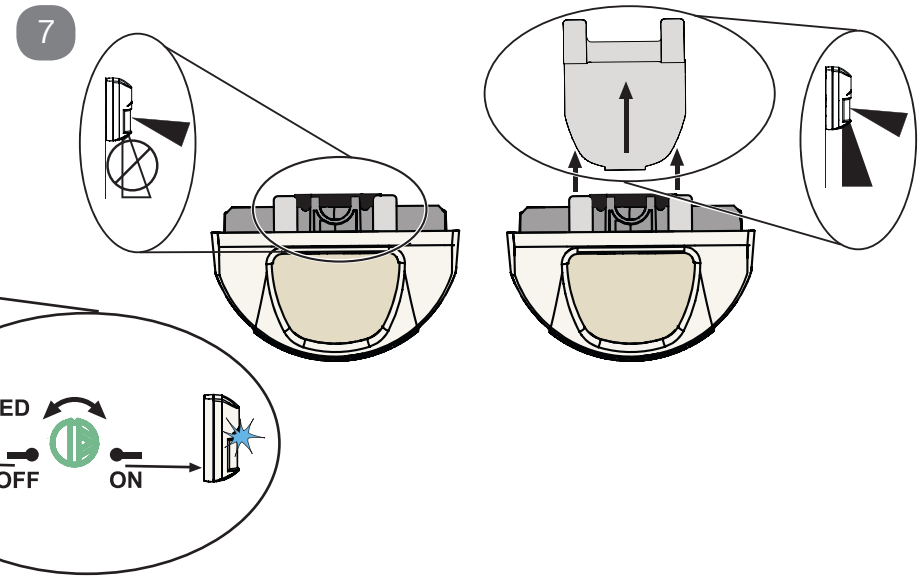
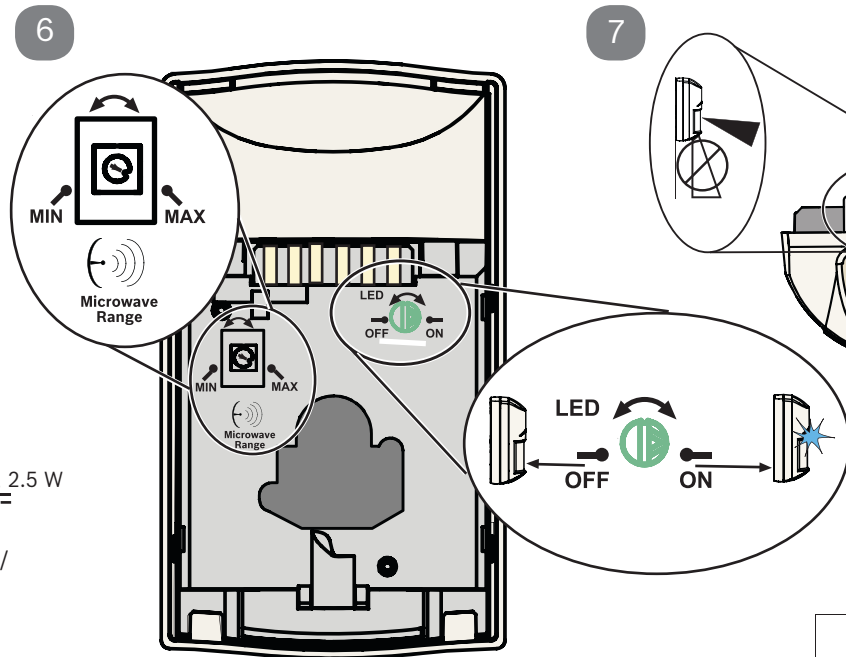
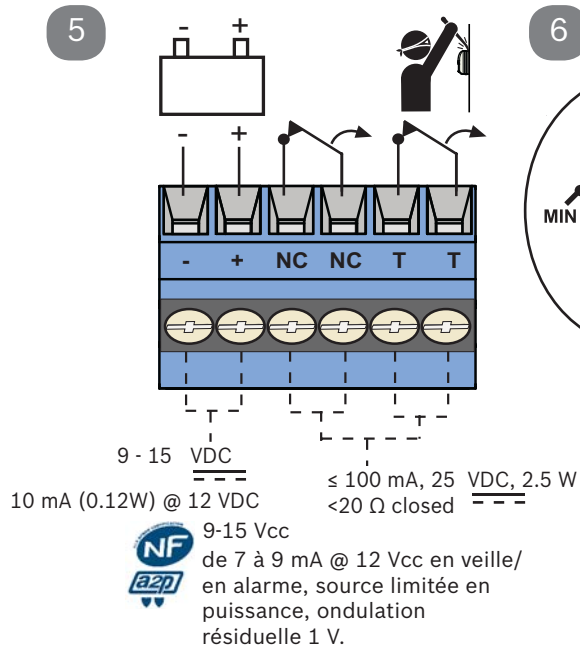
-30°C to +55°C
(-20°F to +130°F)
UL Listed installations,
the temperature
range is 0°C to +49°C
(+32°F to +120°F)

Pour les installations
certifiées NFA2P,
Température de
fonctionnement
-10°C à +55°C

0 - 95% Relative Humidity
(0 - 85% UL/C-UL Installations)

För svensk installationsanvisning se www.boschsecurity.se.





? → www.boschsecurity.com

Reading Bosch Security Systems, Inc. Product Date Codes
For Product Date Code information, refer to the
Bosch Security Systems, Inc. Web site at:
<http://www.boschsecurity.com/datecodes/>.

ANATEL
Modelo: ISC-BDL2-W12G
2140-10-1855

(01) 07891009522227

Este equipamento opera em caráter secundário, isto é, não tem direito à proteção contra interferência prejudicial, mesmo de estações do mesmo tipo e não pode causar interferência a sistemas operando em caráter primário.

