

# **Dahua Player Operation User's Manual**

**Version 1.0.0**

# Table of Contents

|       |                                |    |
|-------|--------------------------------|----|
| 1     | General Introduction .....     | 1  |
| 1.1   | Overview .....                 | 1  |
| 1.2   | Features .....                 | 1  |
| 2     | Installation .....             | 2  |
| 2.1   | Open Player .....              | 5  |
| 3     | Operation .....                | 6  |
| 3.1   | Main Interface .....           | 6  |
| 3.2   | Setting .....                  | 6  |
| 3.2.1 | Add files .....                | 7  |
| 3.2.2 | Group Preview .....            | 7  |
| 3.2.3 | Export File .....              | 7  |
| 3.2.4 | Digital Zoom .....             | 8  |
| 3.2.5 | Drag/Child-window Switch ..... | 8  |
| 3.2.6 | Full Screen .....              | 8  |
| 3.2.7 | Watermark .....                | 9  |
| 3.2.8 | Config .....                   | 9  |
| 3.3   | Playback Interface .....       | 9  |
| 3.3.1 | File List .....                | 9  |
| 3.3.2 | Window Layout .....            | 10 |
| 3.3.3 | Playback Window .....          | 11 |
| 3.3.4 | Playback Control Bar .....     | 12 |
| 3.3.5 | Time Line .....                | 13 |
| 3.4   | Group Preview .....            | 14 |
| 3.4.1 | File List .....                | 14 |
| 3.4.2 | Video Preview .....            | 15 |
| 3.5   | Export File .....              | 16 |
| 3.5.1 | File List .....                | 17 |
| 3.5.2 | Setup .....                    | 18 |
| 3.5.3 | Video Preview .....            | 18 |
| 3.6   | Watermark .....                | 19 |

|     |                     |    |
|-----|---------------------|----|
| 3.7 | Config .....        | 20 |
| 4   | Compatible OS ..... | 22 |

## **Welcome**

Thank you for using our Dahua player!

This user's manual is designed to be a reference tool for the installation and operation of your system!

# 1 General Introduction

## 1.1 Overview

This player is excellent player software for the security field. It has various functions such as play, search, watermark, intelligent track display. It supports multiple-window synchronization play or asynchronous play. It supports multiple-channel display mode and customized setup. It adopts the time line design instead of the traditional process bar. Supports customized time line accuracy setup. It calls the play module to realize play operation and adopts framework design of plug-in matching mode. It reduces the risk of bug occurrence when you are implementing maintenance work and can meet flexible customized requirements.

## 1.2 Features

Frame by frame backward play function, support various speeds.

Multiple-channel playback at the same time.

Local zoom in and drag function (So called electronic PTZ function.)

Support preview by periods to quickly find the scene you needed.

Support intelligent device bit stream playback, can display intelligent event information on the video.

Support watermark function to avoid vicious bit stream modification and support bit stream format switch function.

Optimized player plan.

Optimized audio/video synchronization plan.

Optimized fast play plan, support various fast play speeds.

## 2 Installation

Please follow the steps listed below to complete installation.

Click .exe file, system begins installation. See Figure 2-1.

Check the box to select English and then click next button to continue.

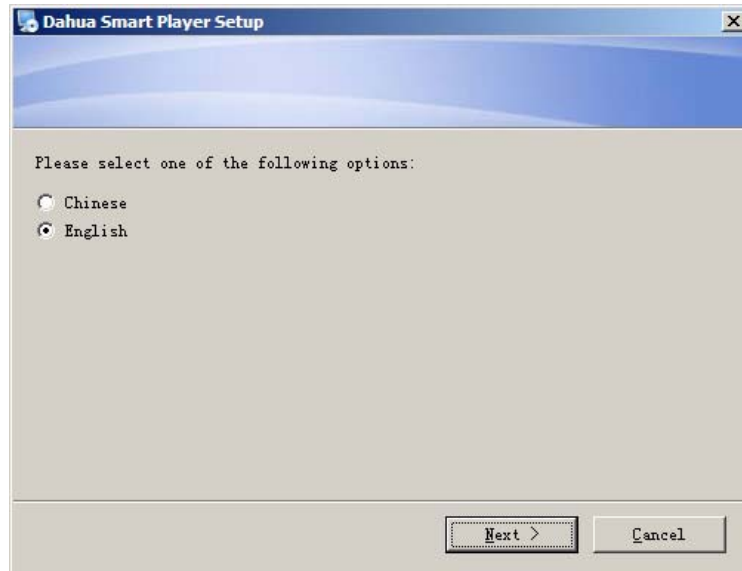


Figure 2-1

The Welcome interface is shown as in Figure 2-2. Here you can see software version and installation suggestions. Click the Next button to continue.

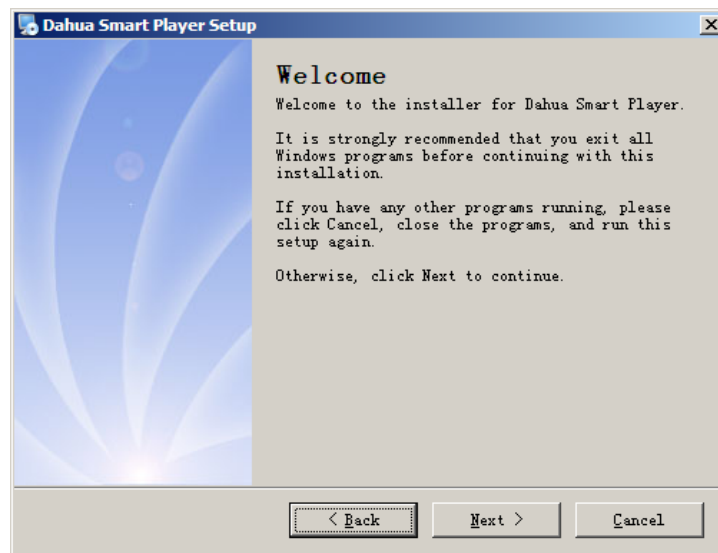


Figure 2-2

Now you can see an interface is shown as in Figure 2-3.

You can click Change button to modify installation directory.

Please click Next button to continue.

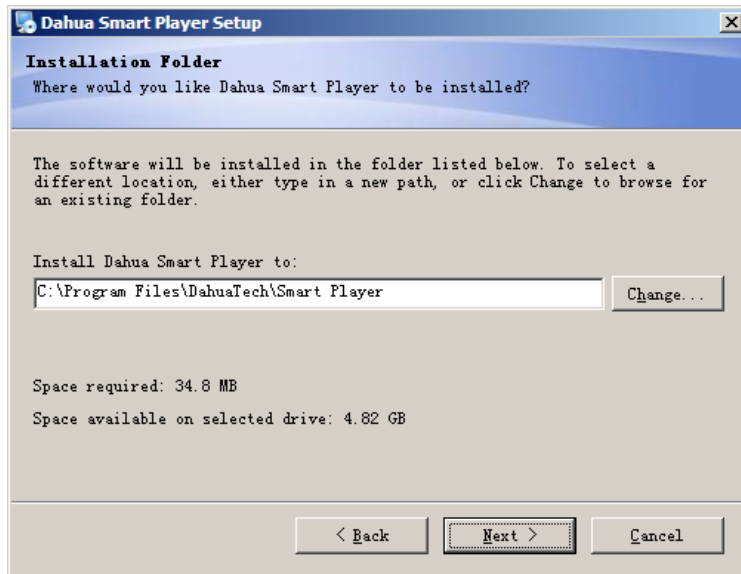


Figure 2-3

Now you can see shortcut folder interface. Here is going to create a new shortcut for Player folder. You can change according to your actual requirements. You can see the following interface. See Figure 2-4.

Please click Next button to continue.

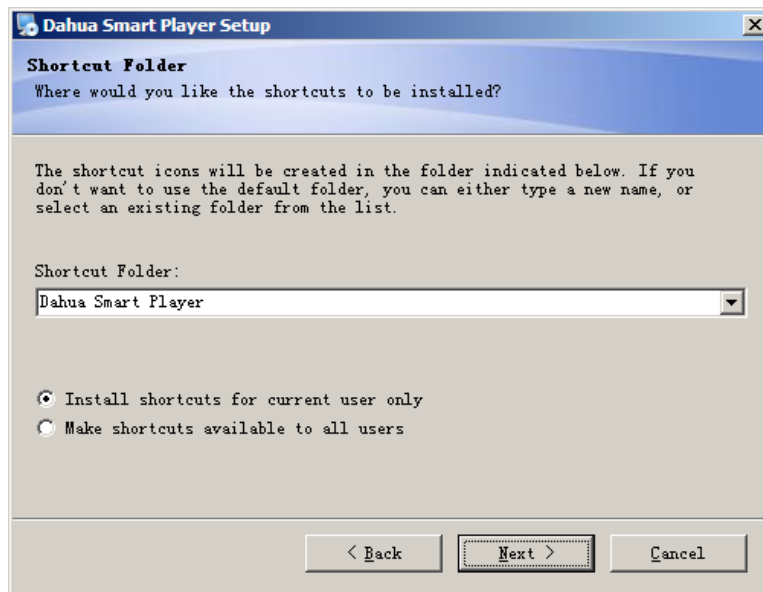


Figure 2-4

Now you go to the following interface. System becomes ready to install. The interface is shown as in Figure 2-5.

Here you can see the installation path, shortcut folder information and etc. Please click Next button to continue.

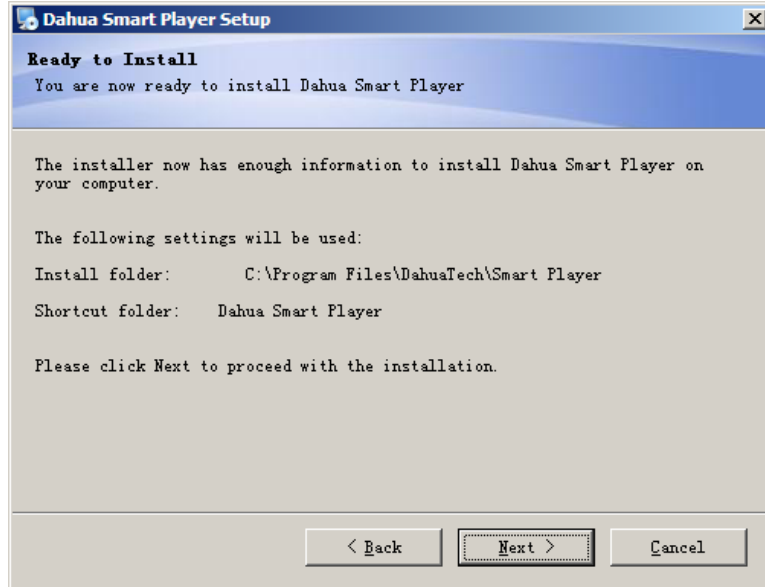


Figure 2-5

Now you can see the installation process. You can click the Cancel button to terminate current installation process. See Figure 2-6.

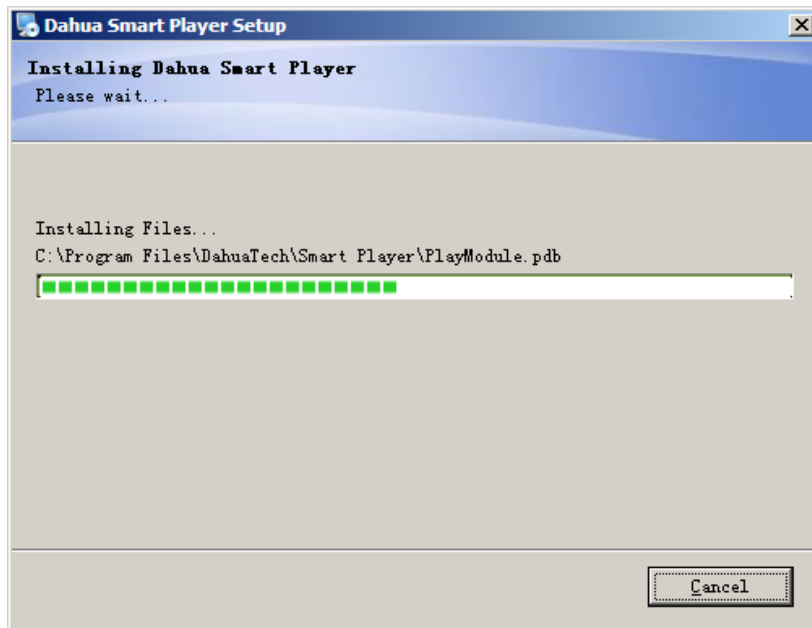


Figure 2-6

After installation, the interface is shown as below. See Figure 3-6. Click Finish button to complete the installation.



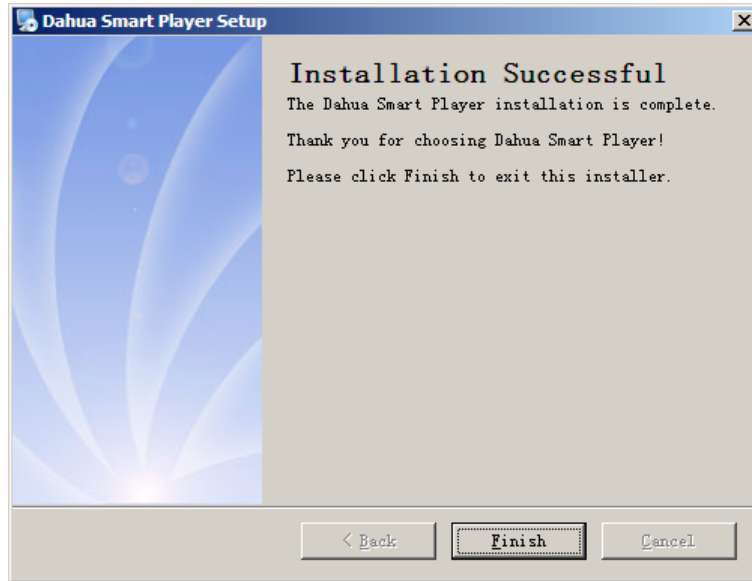


Figure 2-7

## 2.1 Open Player

There are two ways for you to open the player.

You can see the shortcut icon on the desktop after the installation. Double click the icon to run the software. See Figure 2-8.

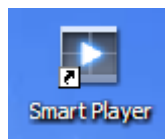
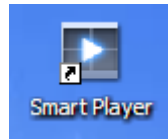


Figure 2-8

After installation, you can see the Player folder from the Start->All programs->Dahua Smart Player->Smart Player. Here you can uninstall software, run software, view user's manual and installation environments.

## 3 Operation

### 3.1 Main Interface



You can click the icon in the installation path or the desk to open the player interface.

Player main interface is shown as in Figure 3-1.

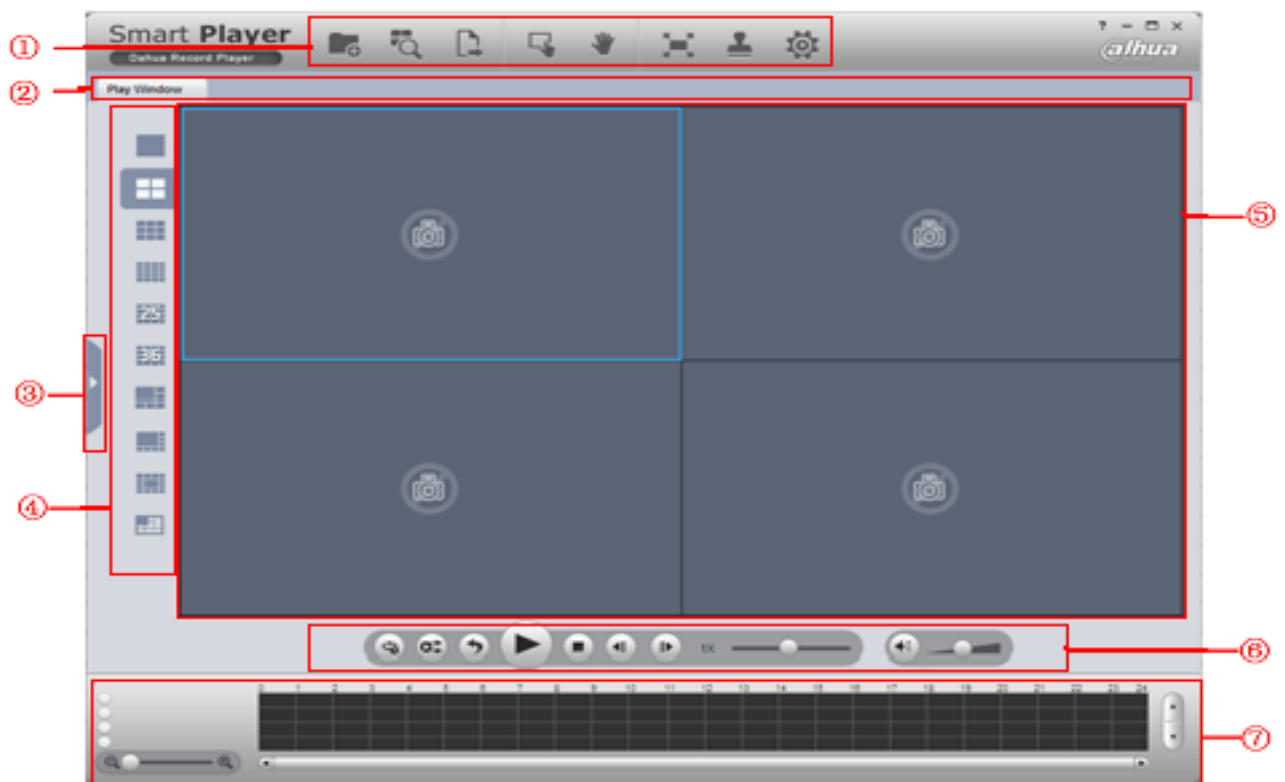


Figure 3-1

Please refer to the following sheet for detailed information.

| SN | Name                          |
|----|-------------------------------|
| 1  | System menu                   |
| 2  | Interface name                |
| 3  | File list display/hide button |
| 4  | Window layout                 |
| 5  | Video play window             |
| 6  | Play control column           |
| 7  | Time line                     |

### 3.2 Setting

System menu is shown as below. See Figure 3-2.

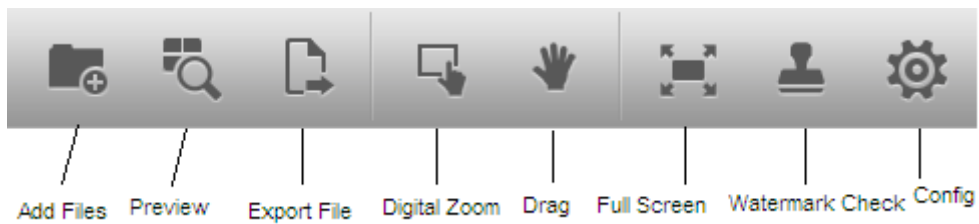


Figure 3-2

### 3.2.1 Add files

Click Add files button in Figure 3-2, you can see system pops up Open dialogue box. The interface is shown as in Figure 3-3. Select the DAV file and then click the OK button, system can automatically add the DAV file on the same directory or the sub-level and add to the corresponding file list. If the DAV file name conforms to the record file name rule, system can relate it to file list of the corresponding channel. Otherwise system creates new list to display current file.

**Tips:** For your convenience, you can drag the DAV file or file directly to the play window. It has the same effect as the Add files button. The preview file is removed once you open another file.

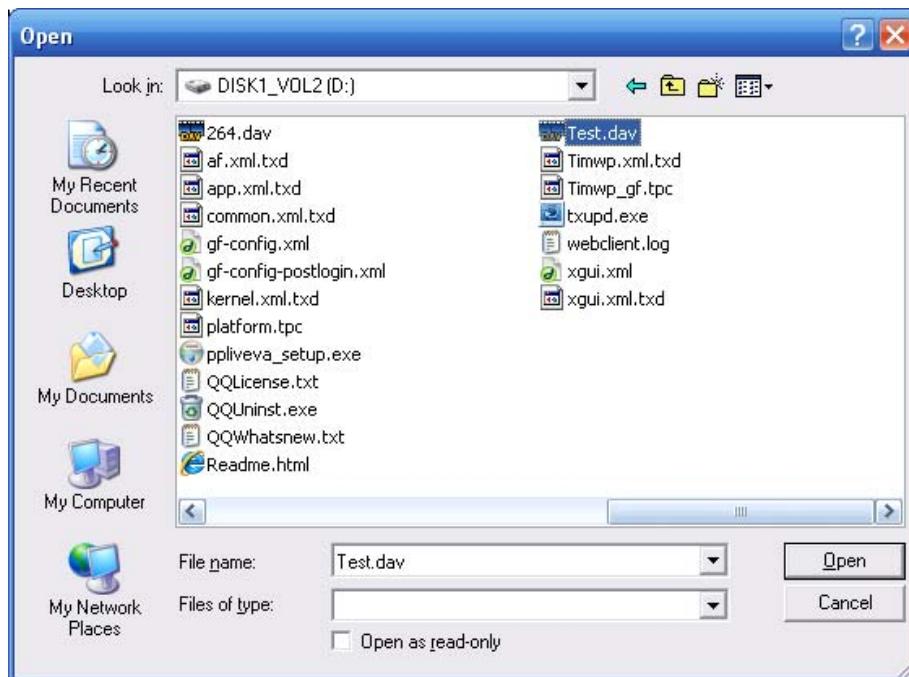


Figure 3-3

### 3.2.2 Group Preview

Click Preview button, you can open or go to group preview interface. It is mainly for the multiple-group preview of one file. See chapter 3.3 for detailed information.

### 3.2.3 Export File

Click Export File, you can open or go to export file interface. It is mainly for the exporting the specified record footages or pictures. See chapter 3.5 for detailed information.

### 3.2.4 Digital Zoom

On the playback interface, click the Digital Zoom button and then left click mouse you can draw a red rectangle, release left button, system can zoom in the specified red rectangle. See Figure 3-4.

**Note:**

System supports some specified zoon in speeds and can not zoom in as much as you click. You can right click mouse to restore the play window.

**Tips:**

Use the middle button of the mouse to zoon in the video as the middle button as the centre.

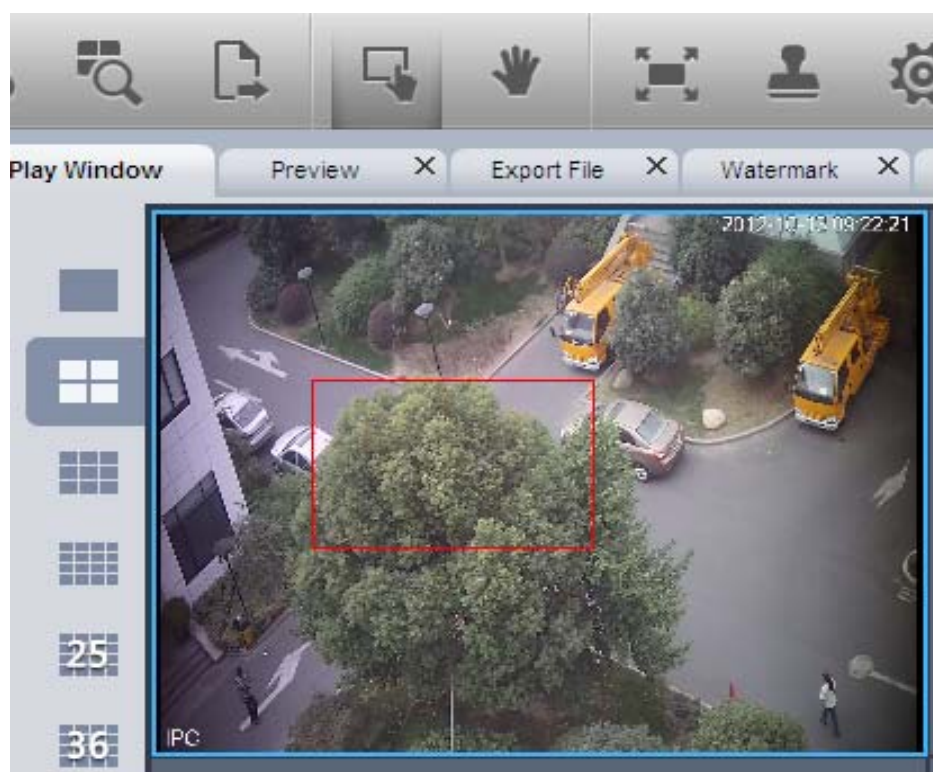


Figure 3-4

### 3.2.5 Drag/Child-window Switch

On the play interface, click Drag button, you can control the play window in these two modes. When system is in drag mode, the mouse indicator becomes palm size. You can use drag operation to view other hidden zones if you have realized digital zoom function. If the system is in child-window switch mode, you can drag one window to another window to realize window switch operation.

### 3.2.6 Full Screen

On play interface, click Full screen button, you can see the play window occupies the whole window. This function is suitable for the video monitor or playback record for a long time. You can click the “Esc” button on the keyboard to restore player main interface.

### 3.2.7 Watermark

Click the Watermark button, you can open or go to Watermark interface. It is mainly for one or several record file watermark operation. See chapter 3.6 for detailed information.

### 3.2.8 Config

Click Config button, you can open or go to configuration interface. In this interface, you can set player snap saved path, format, footage clip saved path and format, play window rate, intelligent track enable/disable, and player language. See chapter 3.7 for detailed information.

## 3.3 Playback Interface

The playback interface is shown as in Figure 3-5.

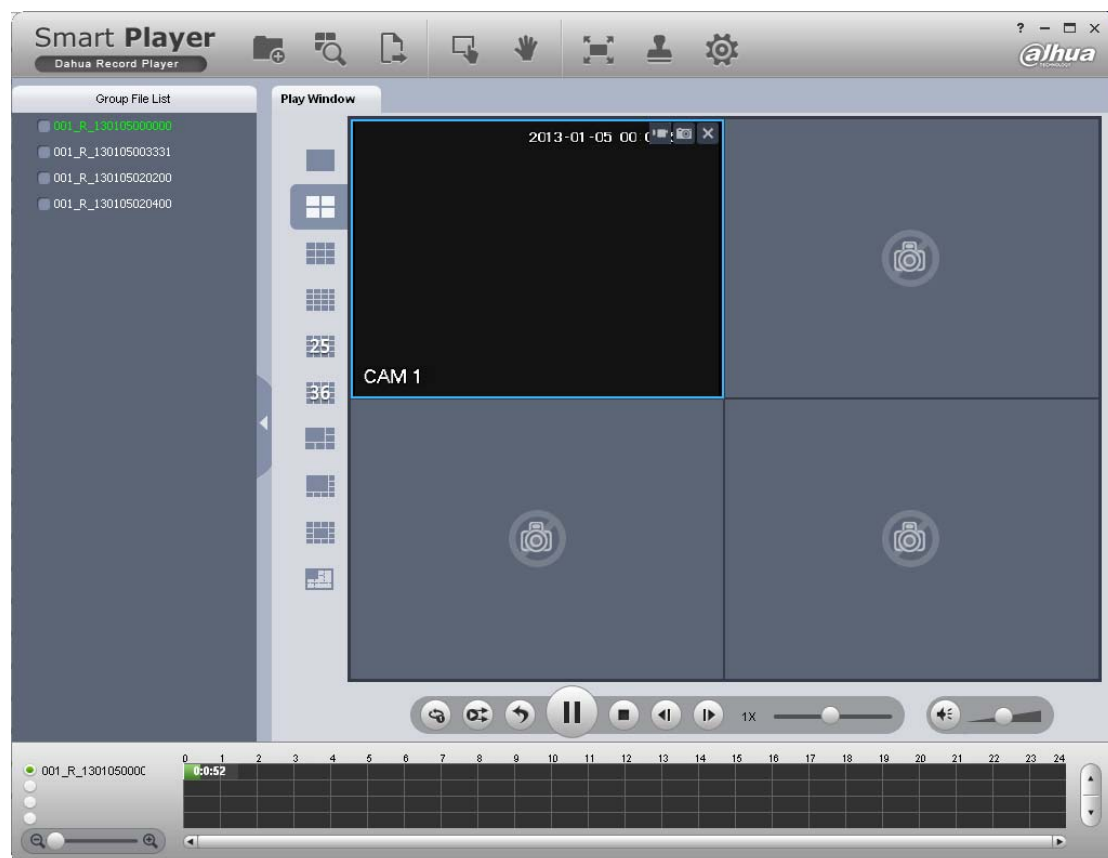


Figure 3-5

### 3.3.1 File List

The file list interface is shown as in Figure 3-6.

The group file list is to display the added file folder, file and the record file on the same directory. Current playback file is shown as green. Check the group name or double-click the group name; you can select a record group.



Figure 3-6

### 3.3.2 Window Layout

Here is to define playback window size and position. Usually there are nine types. You can also customize some special window layouts. You can click the layout button to select the window display mode. See Figure 3-7.



Figure 3-7

Once you click Custom layout, you can see the following interface. See Figure 3-8.



Figure 3-8

Click Edit button, you can edit layout line, row and pane size. See Figure 3-9.

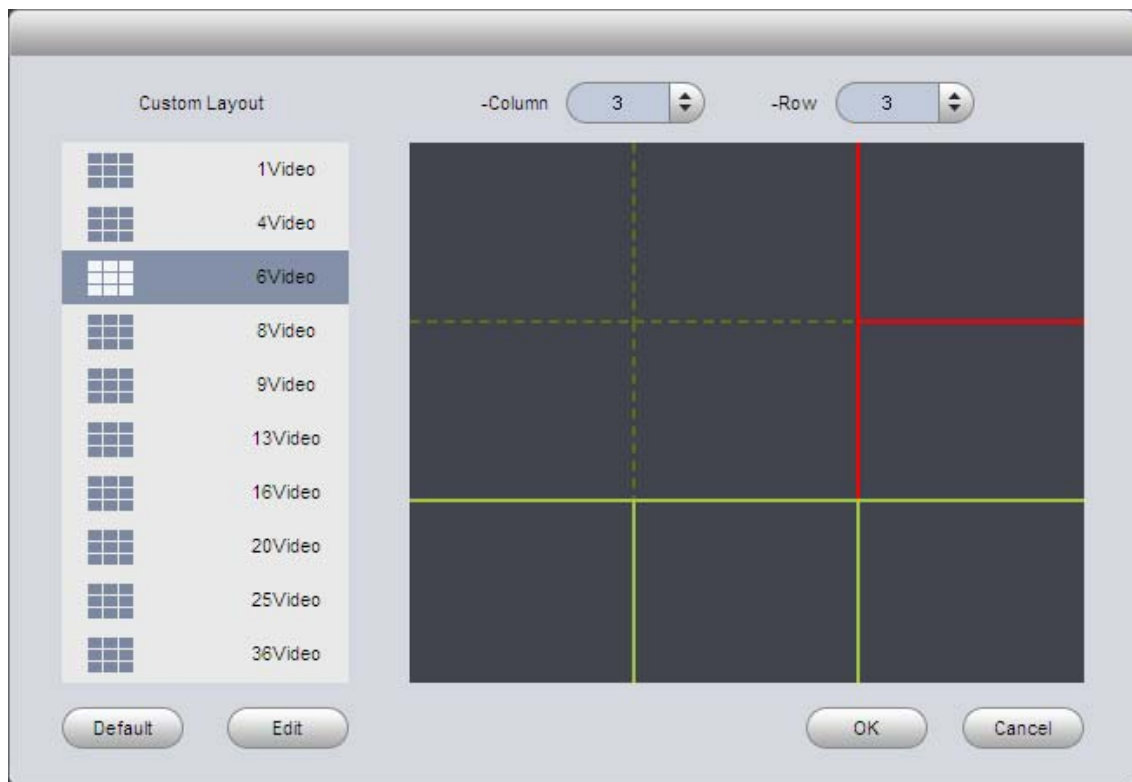


Figure 3-9

### 3.3.3 Playback Window

The playback window is to display record file corresponding information such as file name, time and etc. See Figure 3-10.

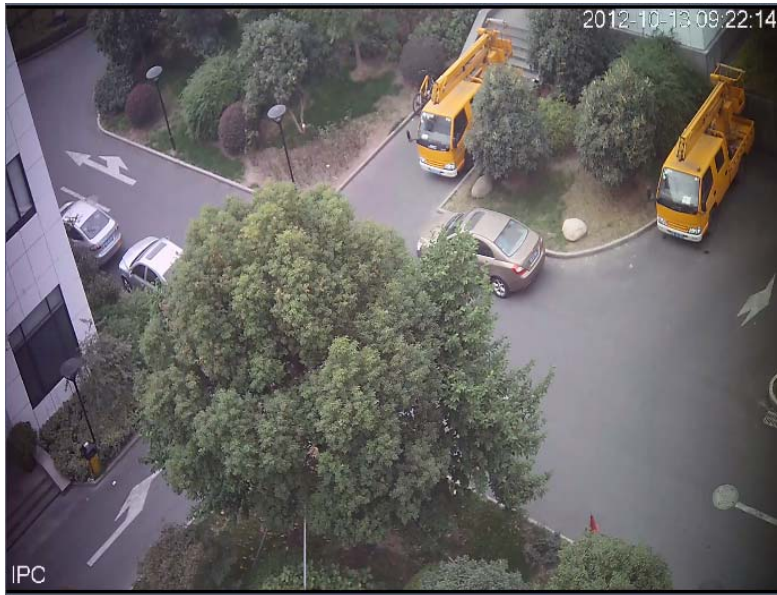


Figure 3-10

Move your mouse to any window; you can see the following control bar at the top right corner. See Figure 3-11.



Figure 3-11

- Clip: It is to edit a record. Please play a file first and then click this button to begin clip. Click this button again, click operation is complete. Now you get a new file. You can go to chapter 3.7 to set save path.
- Snap: Click it to snap one picture. You can go to chapter 3.7 to set save path.
- Close: Click it to close current video window.



### 3.3.4 Playback Control Bar

The playback control bar is shown as in Figure 3-12.

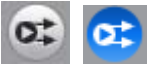





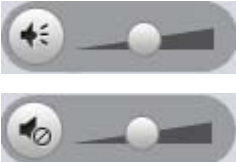


Figure 3-12

Please refer to the following sheet for detailed information.

| Button  | Note  |
|---|---|
|   | <ul style="list-style-type: none"> <li>● System is in single repeated process when the button is highlighted.</li> <li>● System is in sequence play process when the button is grey.</li> </ul> |



|   |   |
|---|---|
|    | <ul style="list-style-type: none"> <li>● System is in synchronization playback process when the button is highlighted.</li> <li>● System is in asynchronous process when the button is grey.</li> </ul> <p>Note: it is for group playback mode.</p>   |
|    | <ul style="list-style-type: none"> <li>● System is in backward playback process when the button is highlighted.</li> <li>● System is in normal playback process when the button is grey.</li> </ul> <p>Note: It is for all-window when system is in group playback mode. It is for current window only when system is not in group playback mode.</p> |
|    | <p>Play and stop button can realize multiple-window pause, playback.</p>  |
|    | <p>Stop: Stop all playback windows.</p>   |
|   | <ul style="list-style-type: none"> <li>● In pause mode, it is the previous frame, next frame playback.</li> <li>● In play mode, it is the preview group, next group playback.</li> </ul> <p>Note: It is for the whole group when system is in group playback. It is for current window only when system is not in group playback mode.</p>            |
|  | <p>Speed setup:</p> <ul style="list-style-type: none"> <li>● 1/2, 1/4, 1/8, 1/16</li> <li>● 1x, 2x, 4x, 8x, 16x</li> <li>● -1/2, -1/4, -1/8, -1/16, -1, -2, -4, -8, -16</li> </ul>  |
|  | <p>Volume setup: You can set volume value and mute. System can play audio when in normal playback process.</p>  |

### 3.3.5 Time Line

After you double click to playback a file, system can automatically add time line. And display the real-time playback time of each window. See Figure 3-13.

Once you check synchronization playback for the whole record group, there is only one time line.

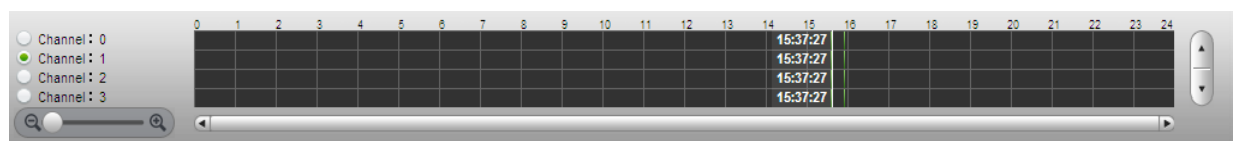


Figure 3-13

## 3.4 Group Preview

Click the Preview button, you can go to the following interface. Here you can view the video by periods and quick find out the video you want. Double click the file or folder you want to implement group preview, system can divide record to N (N= interface amount you set) sections by time. You can preview each period respectively. See Figure 3-14.

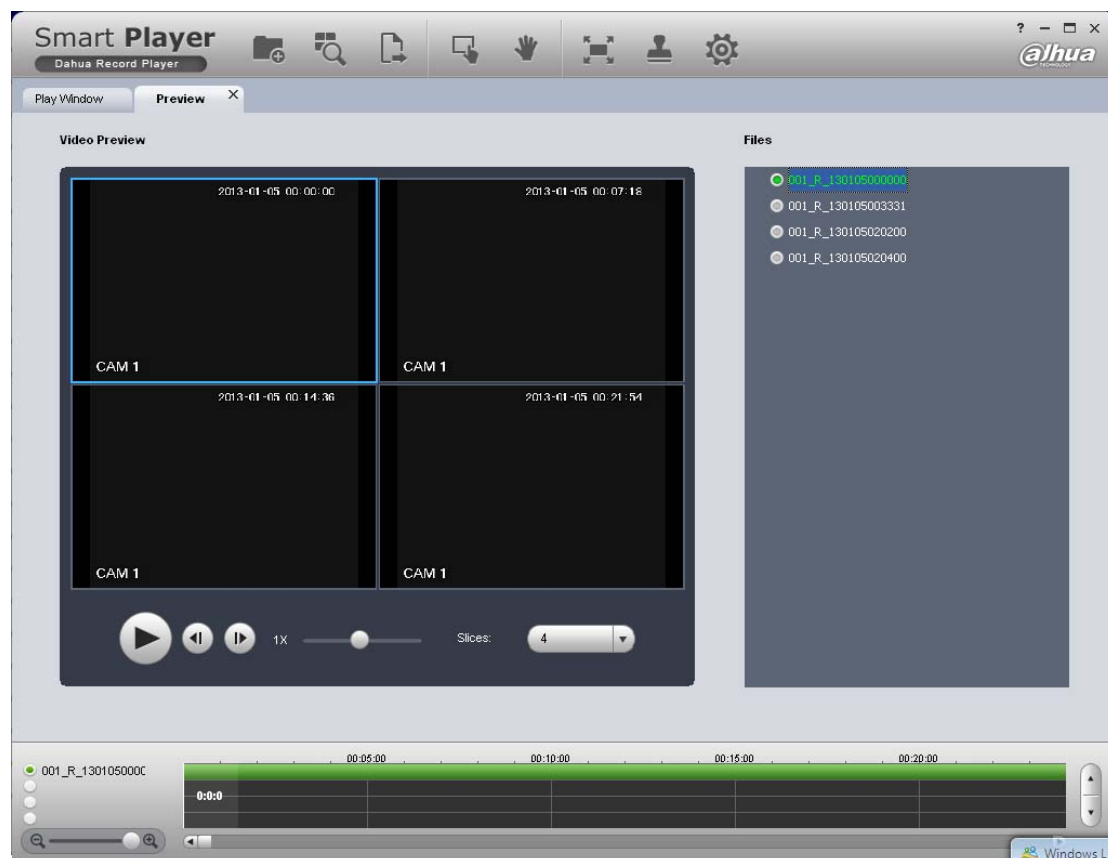


Figure 3-14

### 3.4.1 File List

You can view the file list of current selected folder. It is the same as in the playback interface. See Figure 3-15.

**Note:**

Group preview is for single record only. For record list, there is no record group

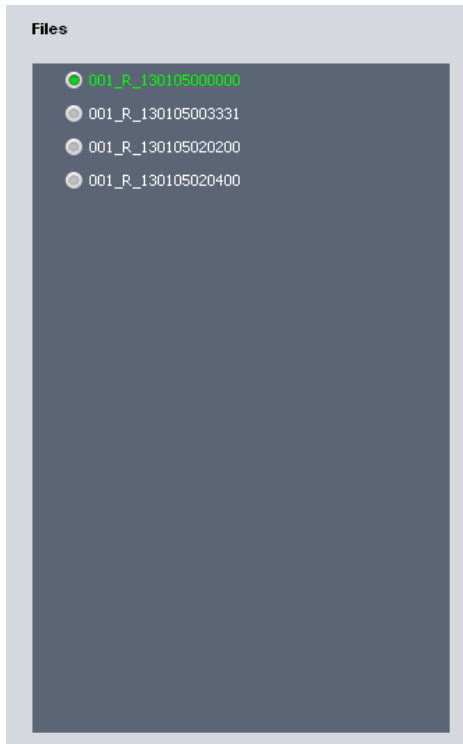


Figure 3-15

### 3.4.2 Video Preview

Double click a file in the list, system can divide the record period according to the section amount and then display corresponding picture. See Figure 3-16. For example, record is from 2:00 to 3:00, the selected section amount is 4, the system displays 2: 00, 2:15, 2:30, and 2:45.

**Note:**

System may take time to create index. Please be patient. .



Figure 3-16

After system crated sections, you can select the corresponding time to play.  
Select corresponding play time window.  
Click Play button, the corresponding window begin play at the displayed time. You can implement pause, frame by frame playback, fast play, slow play and etc.  
Slices: System needs to slice again if there is record in the group preview. See Figure 3-17.

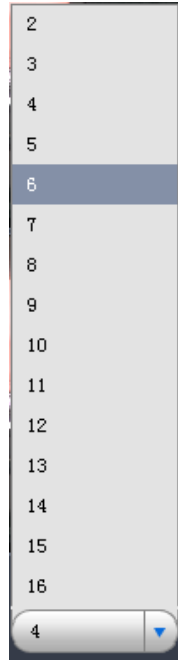


Figure 3-17

### 3.5 Export File

Click Export button, you can see export file interface is shown as in Figure 3-18.  
Select the file(s) you want to export and use the preview to set period, file(s). The export format supports JPG, BMP, DAV, and AVI.

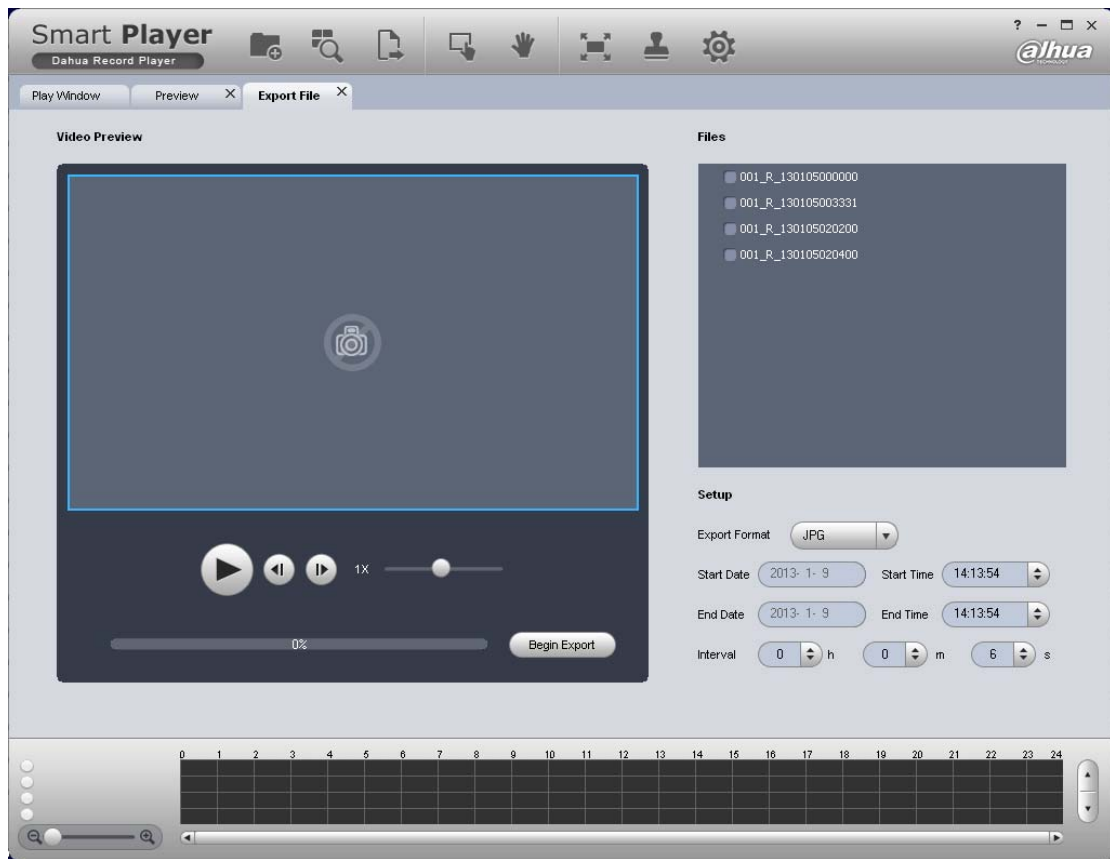


Figure 3-18

### 3.5.1 File List

The file list on the right side is to display all records of current selected folder. It is the same as the records on the playback interface. There are group record and general record. You can batch export record of the same group of the same day. See Figure 3-19. You need to check to select the record you want to export.

- Check a date of one group to select records of all channels of one day.
- Check some channels of one group of one day.
- Check one file; you can see current preview channel is highlighted.

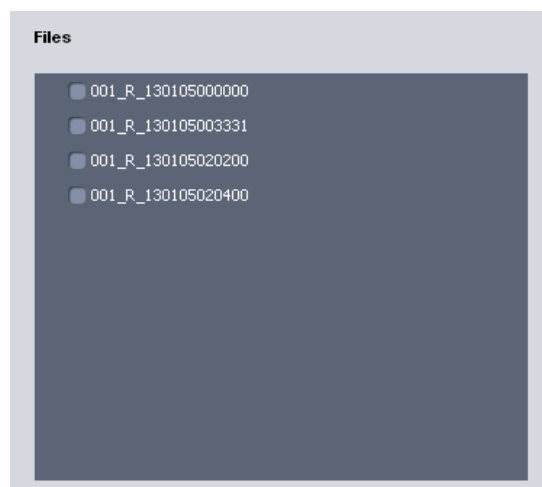


Figure 3-19

### 3.5.2 Setup

The Setup interface is shown as in Figure 3-20.

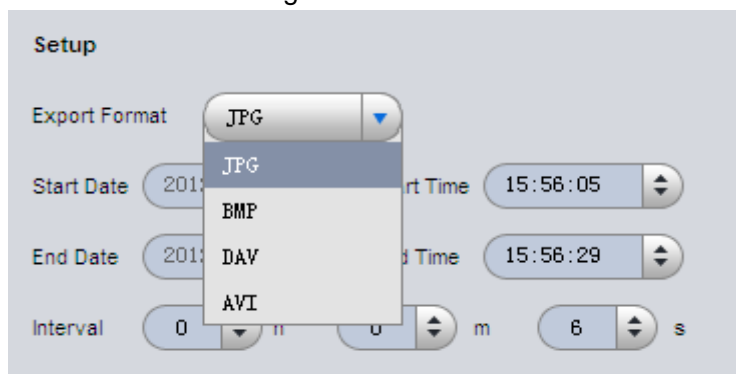


Figure 3-20

Please refer to the following sheet for detailed information.

| Item          | Note   |
|---------------|--|
| Export format | Export modes support JPG, BMP, DAV and AVI. The former two are picture modes and the later two are record modes. |
| Start time    | It is to set file start time; it is corresponding to the left value of the time line.                            |
| End time      | It is to set file end time; it is corresponding to the right value of the time line.                             |
| Interval      | It is to set picture export interface. It is for picture export only.  |

### 3.5.3 Video Preview

**Playback:** Check a file, video preview interface will play the file from the playback list or the record or picture of the highlighted channel. At the same time, you can implement pause, frame by frame playback, slow playback, fast playback and etc. See Figure 3-21.

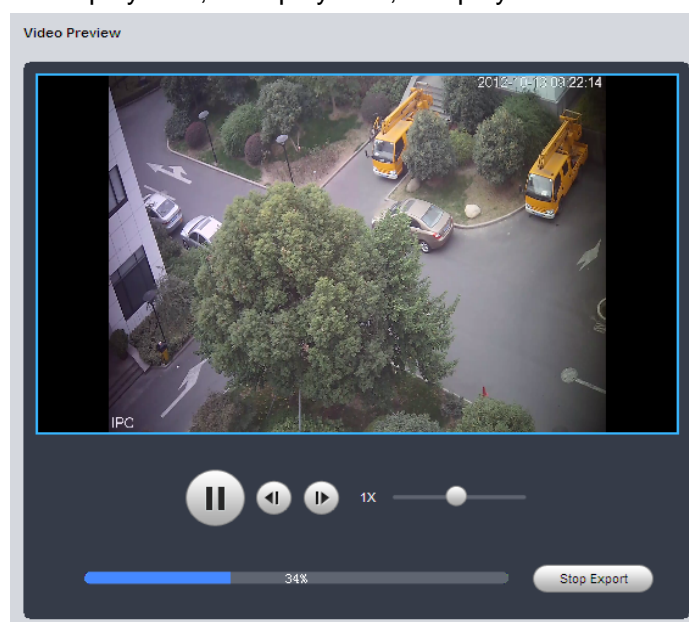


Figure 3-21

**Export:** After you set parameters, click the Begin export button to set save path and then begin. You can view export process bar or you can click the Stop export button to terminate. You can see export succeeded dialogue box after the export operation. See Figure 3-22.

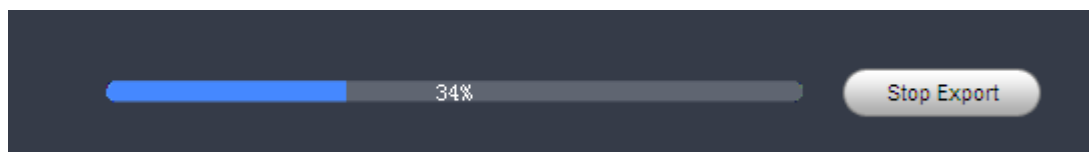


Figure 3-22

### 3.6 Watermark

Click the Watermark button of the system menu; you can go to the watermark interface. See Figure 3-23.

Watermark function is to check the selected record file has been tampered with or not. Select a record file first and then click the Start Check button to begin the process. You can view record path, percentage, check result and etc. You can click the Stop Check button to terminate current process. You can click the corresponding record column of watermark information to view the tamper information. See Figure 3-24.

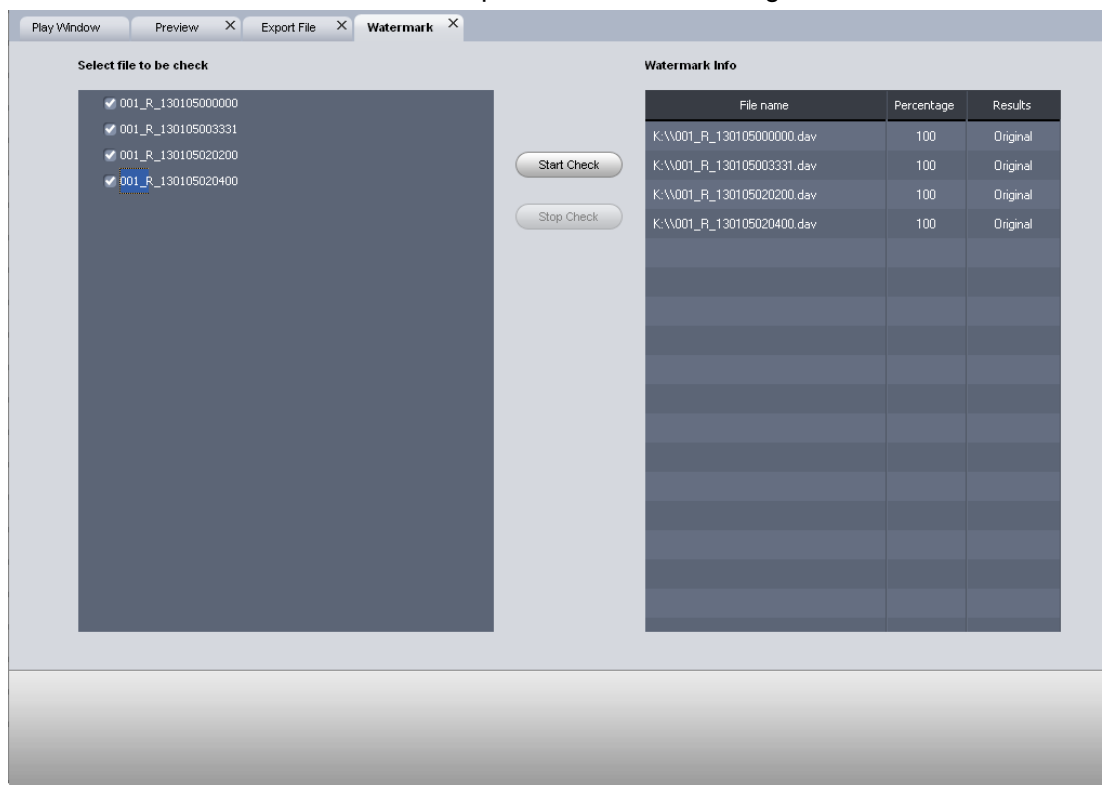


Figure 3-23

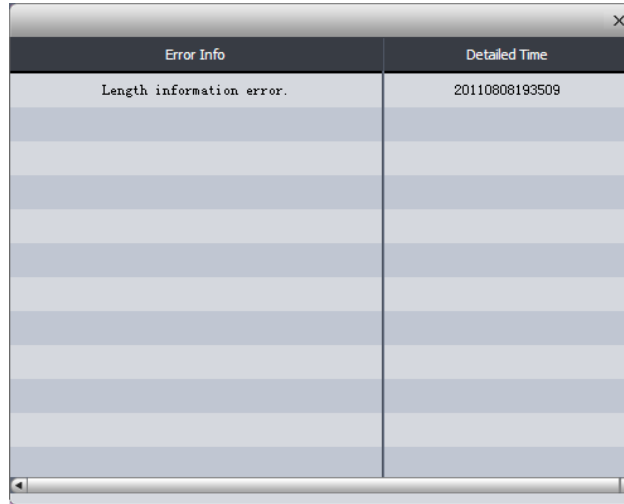


Figure 3-24

### 3.7 Config

Click Config button on the system menu, you can see an interface shown as in Figure 3-25.

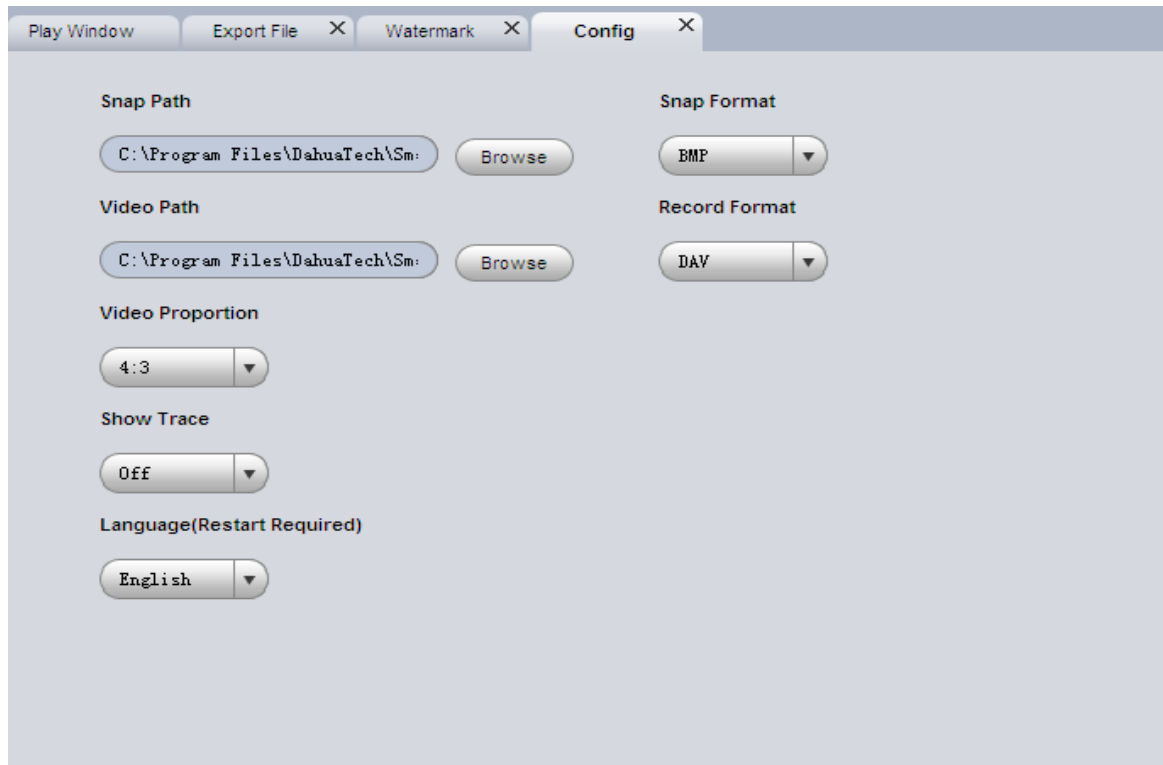


Figure 3-25

Please refer to the following sheet for detailed information.

| Item             | Note  |
|------------------|---|
| Snap path/format | On the playback interface, you click the snap button, |



|                   |   |
|-------------------|---|
|                   | system can save picture to the specified path as your set format.   |
| Video path/format | On the playback interface, you click the record button, system can save record file to the specified path as your set format. |
| Video proportion  | It is to set video window proportion. There are three options: 4:3、 16:9 and 100%.  |
| Show trace        | It is to set display intelligent track or not. Please note it is for intelligent device only.                                 |
| Language          | You can select English/Chinese.<br>Please note system needs to reboot to activate current setup.                              |

**Note:**

System can save current setup even after you close the player.

## 4 Compatible OS

|                                |  |
|--------------------------------|--|
| <b>Mini Requirement</b>        | CPU Intel P4 1.8GHz  |
|                                | 1G memory  |
|                                | 50MB freee HDD space   |
|                                | Resolution16bit 800x600  |
|                                | Mouse, keyboard,USB  |
|                                | Microsoft Windows 95/98/ME/NT4.X/2000/XP   |
| <b>Recommended Requirement</b> | CPU Intel Core 2 Duo E6600   |
|                                | Dual-channel 2G memory or higher, 256M independent display card  |
|                                | 512MB free HDD space or higher   |
|                                | Resolution 16bit 1024x768  |
|                                | Mouse, keyboard,USB  |
|                                | Microsoft Windows 2000-SP4/2003/XP-SP2   |
| <b>Compatible OS</b>           | <ul style="list-style-type: none"> <li>● Windows Server 2003</li> <li>● Windows Server 2008</li> <li>● Windows XP</li> <li>● WIN7</li> </ul> |

### Note:

- This manual is for reference only. Slight difference may be found in the user interface.
- All the designs and software here are subject to change without prior written notice.
- All trademarks and registered trademarks mentioned are the properties of their respective owners.
- If there is any uncertainty or controversy, please refer to the final explanation of us.
- Please visit our website or contact your local retailer for more information.